



SPACE WALL SHELVING SYSTEM – #104

Item # _____ Job # _____

Our Space Wall Shelving System combines the best of our wall grid and wall mounted adjustable shelving system. Our system allows you to maximize workspace, by using open wall space for convenient storage. This frees up valuable floor space for better use. Its quick and easy assembly allows shelves, baskets, hooks and other accessories to be moved, without the use of tools. The modular design and flexibility can be customized to meet your exact requirement.

WIRE GRID PANELS

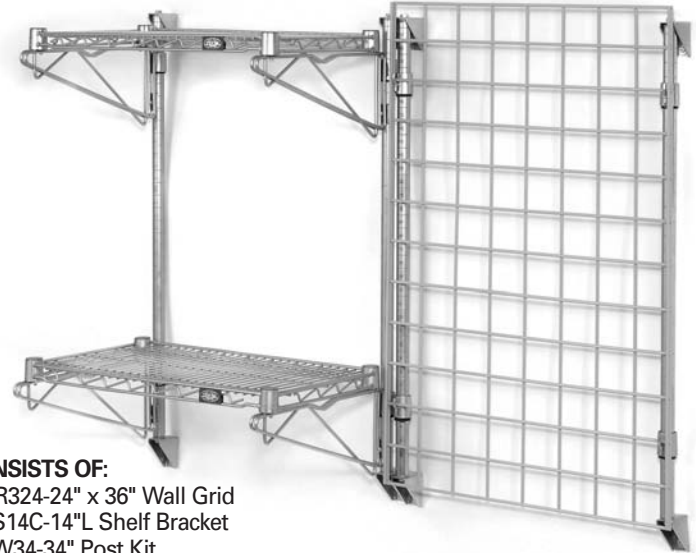


All Grids are 3" x 3" openings 1/4" steel wire. Grey epoxy finish.

| Size" | Model No. | Size" | Model No. |
|---------|--------------|---------|--------------|
| 18 x 36 | DR318 | 36 x 48 | DR436 |
| 18 x 48 | DR418 | 36 x 60 | DR536 |
| 24 x 36 | DR324 | 36 x 72 | DR636 |
| 24 x 48 | DR424 | 48 x 48 | DR448 |
| 24 x 60 | DR524 | 48 x 60 | DR548 |
| 24 x 72 | DR624 | 48 x 72 | DR648 |



SHELF COLLAR HOOK (Set of 4)
Model SSB1C



- CONSISTS OF:**
 1-DR324-24" x 36" Wall Grid
 2-PS14C-14"L Shelf Bracket
 2-PW34-34" Post Kit
 2-S1424C-14" x 24" Chrome Shelves
 1-SSB1C-Shelf Collar Hook Set

ADJUSTABLE SHELF BRACKETS



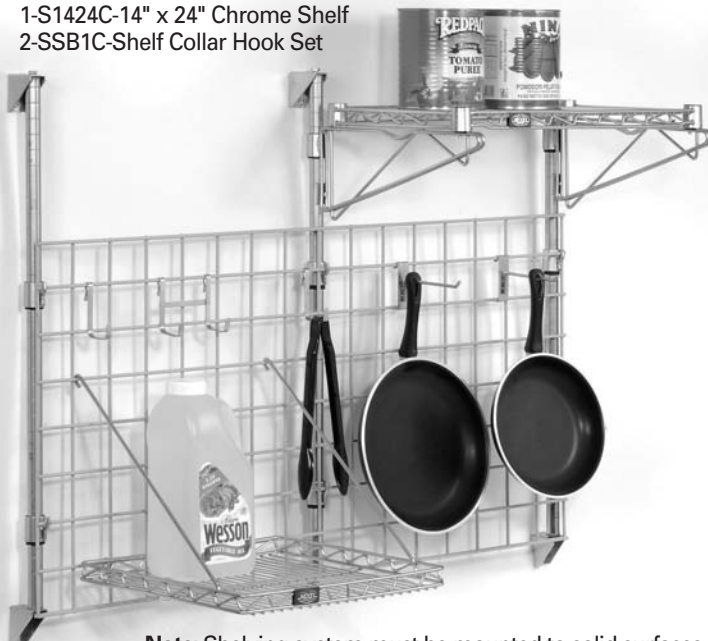
| POST KIT | |
|----------|-------------|
| Size" | Model No. |
| 14 | PW14 |
| 34 | PW34 |
| 54 | PW54 |
| 63 | PW63 |

| DOUBLE SHELF BRACKETS (1 per carton) | |
|--------------------------------------|---------------|
| Size" | Model No. |
| 14 | DPS14C |
| 18 | DPS18C |
| 24 | DPS24C |

| SINGLE SHELF BRACKETS (2 per carton) | |
|--------------------------------------|--------------|
| Size" | Model No. |
| 14 | PS14C |
| 18 | PS18C |
| 24 | PS24C |

NOTE: USES STANDARD SHELVING. ORDER SHELVES SEPARATELY. SEE NEXEL CATALOG.

- CONSISTS OF:**
 1-DR424-24" x 48" Wall Grid
 1-PS14C-14"L Shelf Bracket
 2-PW34-34" Post Kit
 1-S1424C-14" x 24" Chrome Shelf
 2-SSB1C-Shelf Collar Hook Set



Note: Shelving system must be mounted to solid surfaces or studs in the wall. User needs to determine installation materials and methods suitable to support the system.



NEXEL INDUSTRIES INC.

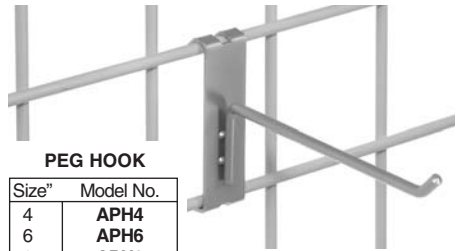
11 Harbor Park Drive
 Port Washington, NY 11050 U.S.A
 1-800-245-6682

NY: 1-516-484-5225 | FAX: 1-516-625-0084
 E-mail: nexelinfo@nexelwire.com
 www.nexelwire.com

SPACE WALL SHELVING SYSTEM – #104



Item # _____ Job # _____

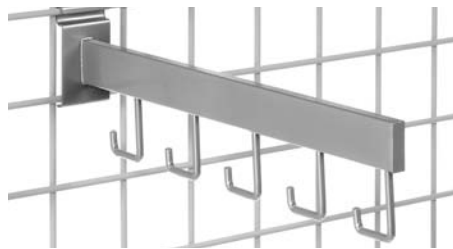


PEG HOOK

| Size" | Model No. |
|-------|-----------|
| 4 | APH4 |
| 6 | APH6 |
| 8 | APH8 |
| 10 | APH10 |
| 12 | APH12 |

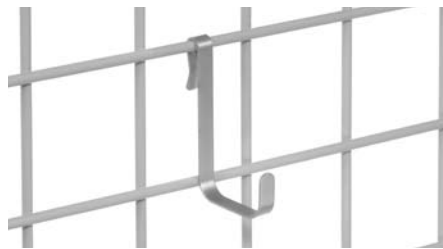
ACCESSORIES

ALL ACCESSORIES ARE CHROME FINISHED UNLESS SHOWN DIFFERENT



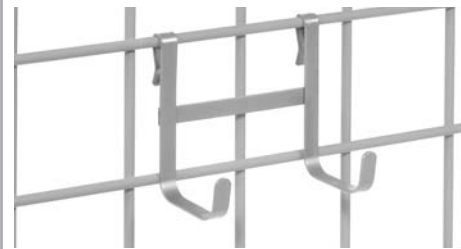
HOOK ARM - 16" L.

| | |
|-----------|-----|
| Model No. | AH5 |
|-----------|-----|



SINGLE HOOK

| | |
|-----------|------|
| Model No. | AWSH |
|-----------|------|



DOUBLE HOOK

| | |
|-----------|------|
| Model No. | AWDH |
|-----------|------|



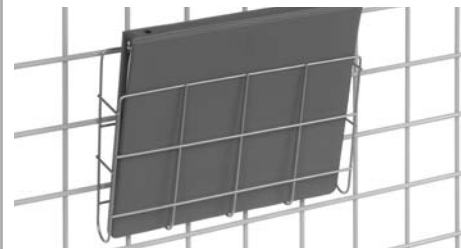
BASKET - 17³/₈" x 7¹/₂" x 10"

| | |
|-----------|--------|
| Model No. | ASW177 |
|-----------|--------|



HOOK RAIL BAR - 24" L with 7-5" L hooks.

| | |
|-----------|------|
| Model No. | ARB7 |
|-----------|------|



DOCUMENT HOLDER - 12³/₈" x 2¹/₂" x 10³/₅"

| | |
|-----------|----|
| Model No. | AH |
|-----------|----|



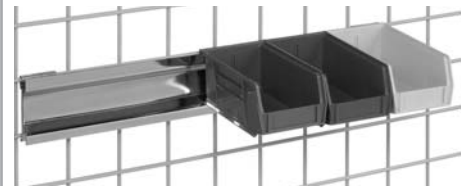
GRID SHELF - 16³/₄" x 16³/₄"

| | |
|-----------|--------|
| Model No. | AGS16C |
|-----------|--------|



SHELF BRACKET - Holds 12" shelf.

| | |
|-----------|-------|
| Model No. | ASB12 |
|-----------|-------|



BIN RAIL - 31¹/₂"

| Size" | Model No. |
|-------|-----------|
| 23 | AWBR23 |
| 35 | AWBR35 |
| 47 | AWBR47 |



WOOD SHELF WHITE MELAMINE LAMINATED

| Size" | Model No. |
|---------|-----------|
| 12 x 36 | AWS1236 |
| 12 x 48 | AWS1248 |



BIN - Includes 4 Hooks to Mount on Grid

| Size" | Model No. |
|-------------|-----------|
| W x D x H | Model No. |
| 36 x 14 x 9 | WB3149 |
| 48 x 14 x 9 | WB4149 |

DIVIDERS - 14"D x 9"H.

Fits both Bins

| | |
|-----------|-------|
| Model No. | WD149 |
|-----------|-------|



WIRE SHELF-GRAY EPOXY

| Size" | Model No. |
|---------|-----------|
| 12 x 36 | DR312 |
| 12 x 48 | DR412 |